



SUBVENTIONS PARTICIPATIVES

Ou si nous cédions davantage de pouvoir aux communautés locales

A close-up photograph of a vibrant green leaf, likely from a maple tree, covered in numerous clear water droplets. The leaf's veins are clearly visible, and the droplets vary in size, some reflecting light. The background is softly blurred, showing more of the leaf and its stem.

Gratitude et reconnaissance

Nous commençons cet atelier en reconnaissant que nous nous réunissons en territoire autochtone. C'est dans le respect des liens avec le passé, le présent et l'avenir que nous sommes reconnaissant·e·s de l'occasion qui nous est donnée de nous réunir et nous remercions toutes les générations de peuples autochtones qui ont pris soin de cette terre.

Cette reconnaissance des contributions et de l'importance historique des peuples autochtones doit être clairement et ouvertement liée à notre engagement collectif à concrétiser la promesse de la vérité et de la réconciliation dans nos communautés.

NOTRE ÉQUIPE



LAYLA BELMAHI



MYRIAM BÉRUBÉ



JAIME STIEF

CONSIDÉRATIONS TECHNIQUES

- **NOUS AVONS TOUT PRÉVU** - VOUS RECEVREZ UN ENREGISTREMENT COMPLET DE L'APPEL, LES DIAPOSITIVES AINSI QUE DES LIENS VERS LES RESSOURCES.
- **PARTICIPEZ À LA CONVERSATION** - UTILISEZ LA BOÎTE DE DISCUSSION SUR VOTRE ZOOM POUR POSER DES QUESTIONS. SUITE À LA PRÉSENTATION, NOUS VOUS INVITERONS À ALLUMER VOS CAMÉRAS POUR PARTICIPER À L'ÉCHANGE ET PARTAGER VOS EXPÉRIENCES.
- **ASSISTANCE TECHNIQUE** - VOUS POUVEZ UTILISER LA BOÎTE DE DISCUSSION POUR DEMANDER UNE ASSISTANCE TECHNIQUE TOUT AU LONG DU WEBINAIRE.

MISE EN CONTEXTE

Qu'est-ce que l'octroi participatif de financement ? Comment cette pratique se différencie-t-elle d'autres formes d'octroi de subventions?

OCTROI PARTICIPATIF DE FINANCEMENT

(“PARTICIPATORY GRANTMAKING”)



Dans ce modèle de financement, les fondations cèdent leur pouvoir décisionnel aux membres des communautés, auxquels les projets ou les services sont destinés.

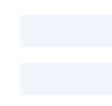
La communauté définit les besoins et les priorités



L'expertise du contexte et les savoirs collectifs sont valorisés

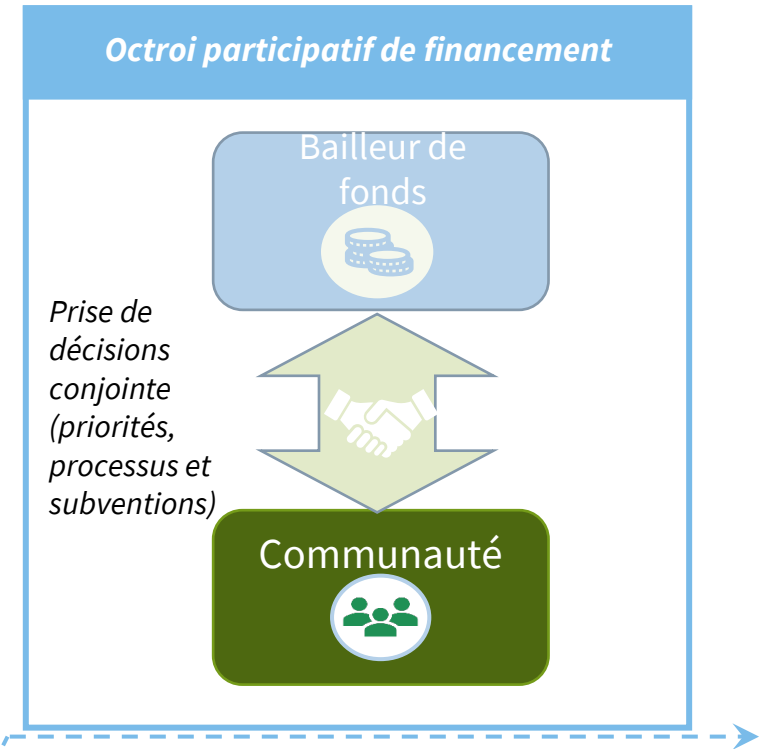
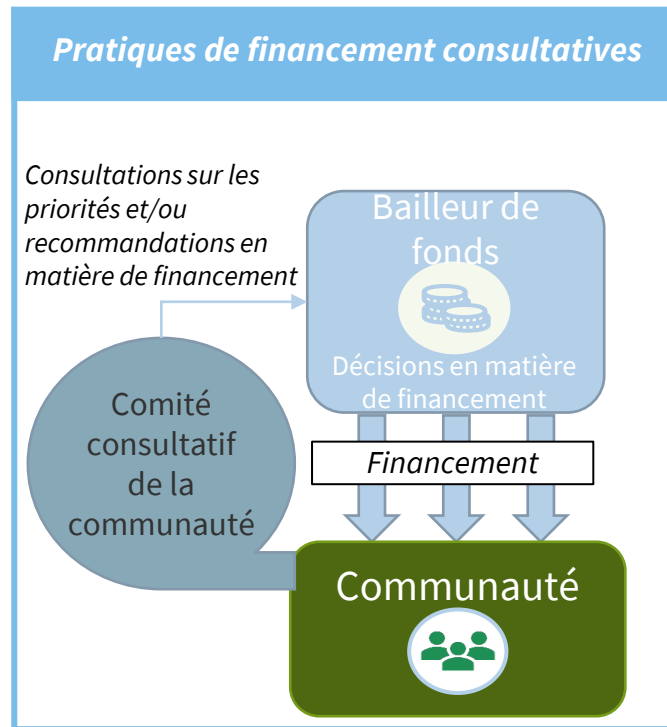
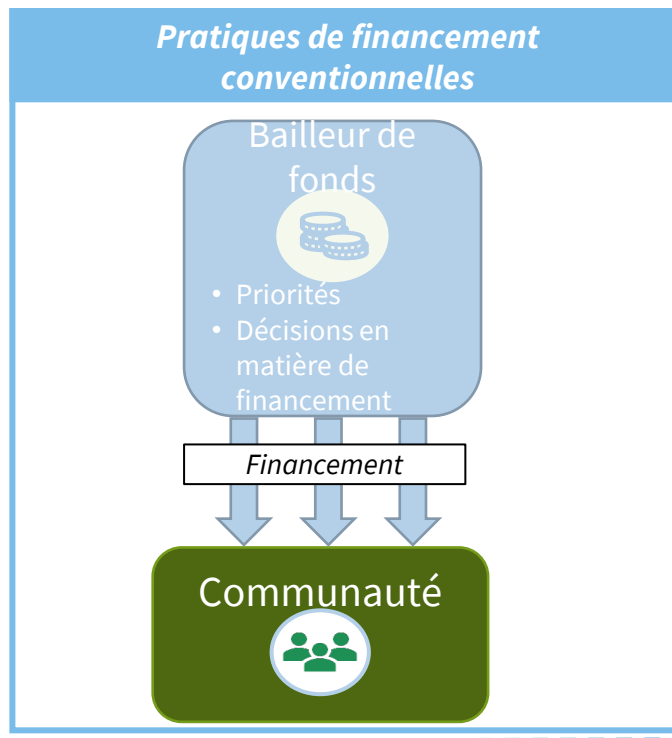


Le pouvoir décisionnel est cédé à la communauté



Les décisions d'allocation de fonds sont adaptées au contexte

PRATIQUES DE FINANCEMENT



GENÈSE

Quelle est la genèse du projet d'octroi participatif de financement dans la région de Peel ? Quelles sont les étapes-clés du projet jusqu'à maintenant ?



Partenaires

Projet pilote visant à favoriser l'équité sur le marché du travail des personnes immigrantes et réfugiées



Pour en apprendre davantage sur le projet (en anglais seulement)

<https://www.tamarackcommunity.ca/participatory-grantmaking>

LES ÉTAPES-CLÉS DU PROJET

NOV. 2021-AVRIL 2022

1

LA CONCEPTION PARTICIPATIVE

Recrutement du
comité participatif

12 membres
5 rencontres virtuelles

Définition des besoins,
priorités et processus

Paramètres de l'appel
à proposition

2

LA PROMOTION ET LA SENSIBILISATION

Promotion de l'initiative
de financement auprès
des organismes de Peel

Sessions d'information et
de coaching pour les
organismes

3

L'OCTROI DE SUBVENTIONS

Préparation
individuelle

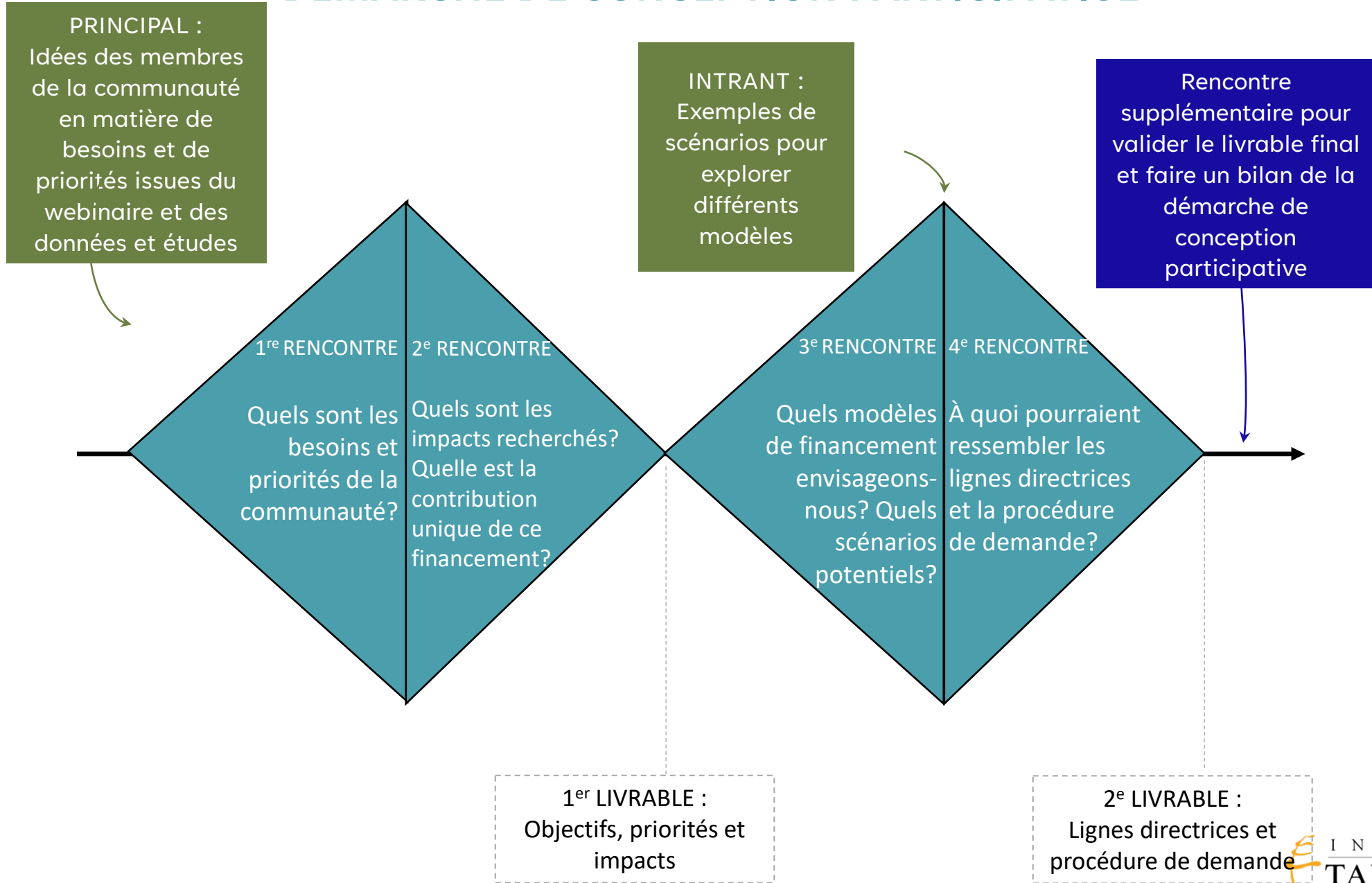
2 rencontres d'analyse
collectives

600 000\$ octroyés par
consensus à 6 projets

PARTICIPATION

Comment l'accompagnement de Tamarack a-t-il contribué à fédérer la participation des membres du comité autour d'un objectif commun ?

DÉMARCHE DE CONCEPTION PARTICIPATIVE



RÉSULTAT DE LA CO-CONCEPTION

APPLY FOR FUNDING

Building Equitable Economies for Immigrants and Refugees in Peel



ABOUT THIS FUNDING OPPORTUNITY

This funding opportunity for the Peel community has been developed through a participatory model.

The [WFS Mariam Assefa Fund](#) partnered with the [Tamarack Institute](#) to engage residents and community stakeholders to form a People's Panel, who co-designed this funding opportunity to build equitable economies for immigrants and refugees.

The Panel members reflected on their sector knowledge and lived experiences within Peel to identify diverse needs and define priorities to create targeted change and impact that will remove economic barriers for immigrants and refugees.

This process was also supported by the Peel Newcomer Strategy Group (PNSG), whose sector knowledge and understanding of the local landscape helped ground the Panel's work. The People's Panel will also be making funding decisions for selected projects or initiatives.

[Learn more about the Participatory Grantsmaking Project](#)

OBJECTIVE

This fund aims to support **EMPLOYMENT-FOCUSED EFFORTS** towards serving and empowering marginalized* immigrants and refugees, that offer holistic, responsive and collaborative solutions that are grounded in the Peel community to remove economic barriers and build more equitable economies.

* In the context of this fund, the marginalization of immigrants and refugees refers to both a process and a condition that prevents individuals or groups from full participation in social and economic life. Discrimination or exclusion from economic opportunities can impact on a wide range of groups based on immigration status, country of origin, race, language, etc. such as but not limited to racialized groups, particularly women, undocumented migrants, newcomers, including seniors, international students, precariously employed, unemployed or underemployed immigrants and refugees, low-income immigrants and refugees.

PRIORITIES

- 1 Engage industry and employer to position marginalized immigrants and refugees' skills to emerging labour market needs.
- 2 Develop entrepreneurship skills and job readiness while aiming for system change to create self-employment pathways for marginalized immigrants and refugees.
- 3 Implement the holistic integration of mental health supports into settlement and employment services.
- 4 Align service navigation and accessibility to the marginalized immigrants and refugees perspective and experience. For example, including access to targeted and wrap-around services to prevent and address issues that create barriers to employment (e.g. worker exploitation, housing needs, obtaining status, etc.).

APPLY FOR FUNDING



WHO CAN APPLY?

Peel based or Peel serving non-profit organizations, community agencies or groups and collaboratives whose work is related to workforce development and/or immigrant and refugee settlement.

Groups that are [not registered charities](#) are encouraged to apply alongside a co-applicant, who has a charitable registration number and will serve as their fiscal sponsor.

We encourage applicants to:

- ▶ Work in partnerships with community groups or grassroots initiatives to develop strategies rooted in the community's needs and build organizational capacity.
- ▶ Actively engage employers and industry in the process (especially small and medium-sized businesses).
- ▶ Work collaboratively to develop projects and strategies that engage the diverse services and organizations that make up Peel's employment and settlement sector.

DEADLINE

March 9th, 2022 at 5 pm.

GRANTS

STREAM 1 \$50 000-\$75 000
for a single-organization application for a small-scale project.

STREAM 2 \$75 000 - \$150 000
for joint application from several organizations for a larger-scale project.

DURATION

12 months
starting May 1, 2022 to April 30, 2023

Potential uses of the funding (examples of strategies):

Testing new projects or programs • Seeding innovation and pilot projects • Enhancing accessibility to existing programs that are not already well-resourced • Replicating or scaling workforce development models and approaches that are proven to be effective • Developing collaboration and partnerships to increase overall sector capacity • Advancing advocacy and systems change • Building capacity (e.g., training for staff, technical assistance, research, technology, etc.)



HOW TO APPLY?

Applicants must submit the online [application form](#) and a budget **before March 9, at 5 pm. (only one project per applicant).**

We invite applicants to:

- ▶ Register to an [open-to-all information session](#) on February 2, from 3 to 4 pm.
- ▶ Attend of the coaching calls on [zoom](#) to ask specific questions regarding their project on February 15, (1 to 2 pm) and March 1, (12 to 1 pm). Applicants may drop in at any time during those hours.

LEARN MORE AND APPLY NOW! >

APPLY FOR FUNDING

ASSESSMENT CRITERIA

RELEVANCE AND NEEDS BASED

- ▶ The project is relevant with respect to the intention of this funding opportunity and the issues it seeks to address.
- ▶ The project responds to the recognized needs of marginalized immigrants and refugees in a holistic approach. More specifically, it demonstrates a critical understanding of the overlapping and diverse issues that shape how marginalized immigrants and refugees navigate employment within the Peel region, and identifies the gaps within existing employment and settlement services and how this impacts marginalized immigrants and refugees.

ALIGNMENT WITH OBJECTIVES

- ▶ The project clearly responds to one (or more) of this funding opportunity's priorities proposing relevant strategies, responsive solutions or generating future-focused opportunities.

EQUITY

- ▶ The project fosters equity and considers intersectionality while defining its key demographics.

IMPACT

- ▶ The project defines clear, measurable and realistically achievable results in the timeframe. The project could represent the first phase or initial stage of a longer-term initiative.

Examples of potential results:

- ▶ "Developed accessible referral pathways which resulted in X number of marginalized immigrants and refugees finding self-employment opportunities."
- ▶ "Enhanced the employability of X number of marginalized immigrants and refugees through skills development programming"
- ▶ "Developed mental health supports within settlement agencies that have supported X number of marginalized immigrants and refugees accessing high-quality services."

ENGAGEMENT AND COLLABORATION

- ▶ The project fosters engagement of immigrants and refugees, collaboration or partnerships within the Peel community.

ACCOUNTABILITY

- ▶ The project incorporates processes that emphasize accountability and transparency to all involved stakeholders. For example, this can be achieved through engagement and a participatory approach to decision-making. More specifically, the project demonstrates mechanisms that will enable stakeholders users of services or the wider Peel community to input into decisions that affect them.

TIMELINE

2022

January 26

Launch of the Fund

February 2

Information session 3 to 4 pm

February 15

Optional coaching calls "Drop-in" Hours 1 to 2 pm

March 1

Optional coaching calls "Drop-in" Hours 12 to 1 pm

March 9

Deadline for applicants

April 22

Inform Grantees of decisions

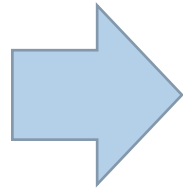
LEARN MORE AND APPLY NOW! >

Any question? Please [contact us](#)



PROJETS SOUTENUS

Deux sessions de travail du comité
participatif pour prendre les
décisions d'allocation par consensus



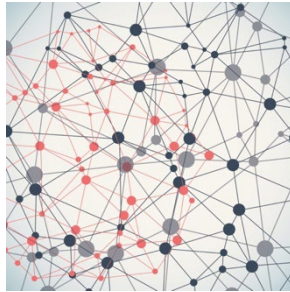
600 000\$ subventions – octroi participatif

- **Afghan Women's Organization (74,520\$)**
- **Family Services of Peel (149,695\$)**
- **Laadliyan (75,000\$)**
- **MIAG Centre for Diverse Women and Families (131,832\$)**
- **Peel District School Board (75,000\$)**
- **Sikhs Serving Canada Association (Seva Food Bank) (93,953\$)**

APPRENTISSAGES ET PERSPECTIVES

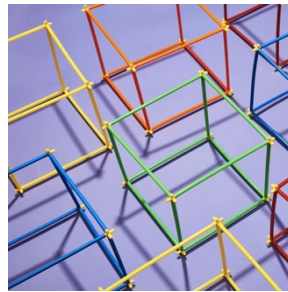
Quels défis sont à anticiper? Quels apprentissages tirez-vous de cette expérimentation qui est toujours en cours de réalisation?

APPRENTISSAGES



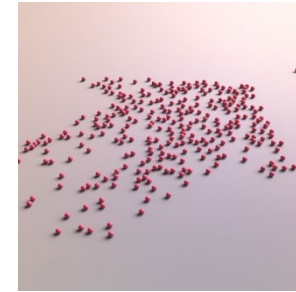
TISSER DES LIENS AVEC LA COMMUNAUTÉ

Confiance
Légitimité
Contribution



RENDRE VISIBLE LA CONTRIBUTION À CHAQUE ÉTAPE DU PROJET

Écoute
Inclusion
Empowerment



SURMONTER LES DIVERGENCES DE POINTS DE VUE

Communication ouverte
et confiance
Animation participative
Responsabilité partagée

QUESTIONS POUR LES PARTICIPANT.E.S

- Quelles approches participatives avez-vous expérimenté dans vos milieux en matière de financement?
 - Quels sont les avancées et les bénéfices observés?
 - Quels sont les défis rencontrés?
 - Quelles sont les conditions facilitantes?
- Quelles réflexions / questionnements portez-vous quant à l'octroi participatif de financement?
- Quelles pistes pourrions-nous envisager pour faire avancer cette pratique ?



A landscape of rolling green hills under a sunset sky. The sky transitions from a deep orange at the top to a darker, reddish-orange near the horizon. The hills are covered in lush green grass, with some areas appearing slightly darker due to shadows. The word "MERCI!" is overlaid in the center in a bold, white, sans-serif font.

MERCI!