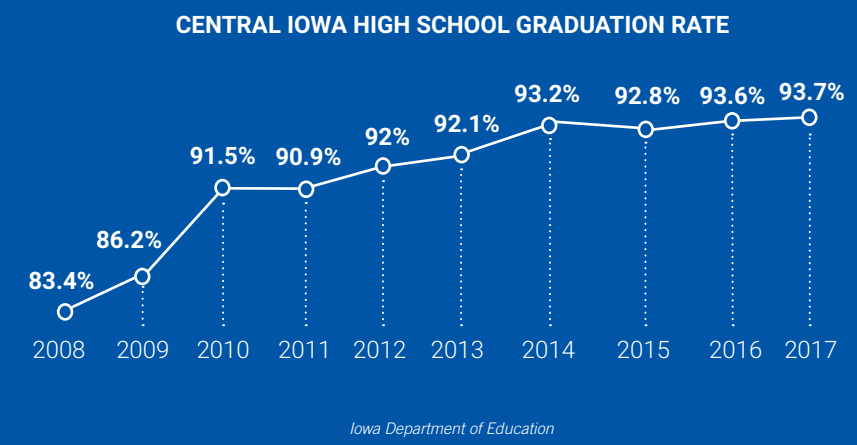


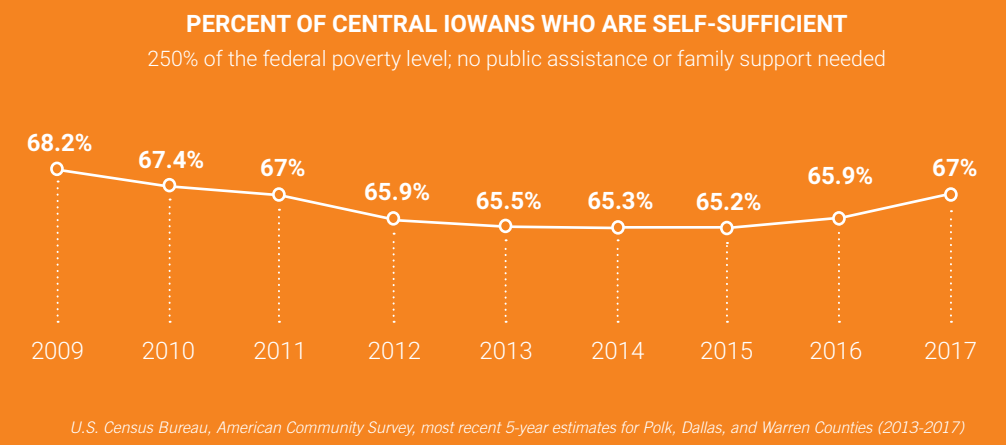
EDUCATION

Increase the percentage of central Iowa students who graduate from high school to **95%**



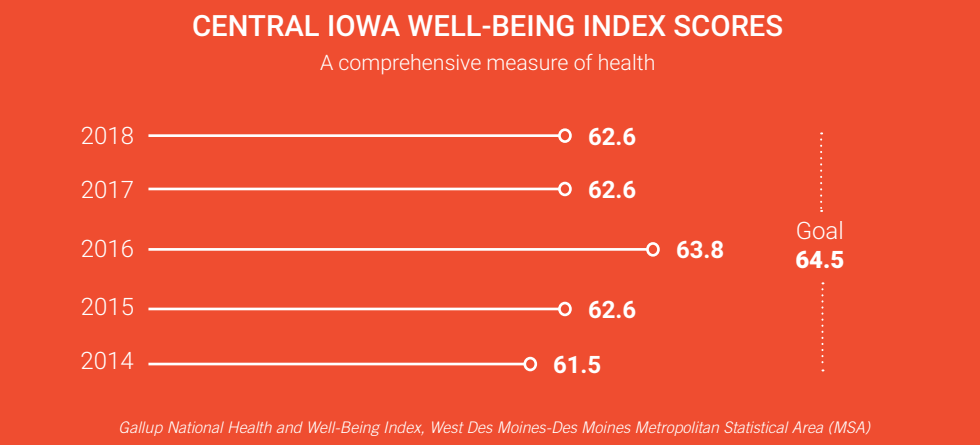
INCOME

Increase the percentage of central Iowans who are financially self-sufficient to **75%**



HEALTH

Increase central Iowa's Gallup National Health and Well-Being Index score to **64.5**



CHILDREN HAVE BOOKS TO LEARN

61%

of low-income families **don't own** any children's books. The number of books in a child's home is the best predictor of reading exam scores.

Children's Literacy Foundation

STUDENTS READ PROFICIENTLY

24%

of central Iowa students are not reading proficiently by the end of third grade.

Iowa Department of Education

Children who cannot read at grade level by the end of third grade are **4 TIMES** less likely to graduate from high school.

Annie E. Casey Foundation

YOUTH RECEIVE SUPPORT TO GRADUATE

Sixth-graders who do not attend school regularly, receive poor behavior marks, or fail math or English have no more than a **10% CHANCE** of graduating on time.

Balfanz & Herzog

ADULTS GAIN SKILLS FOR BETTER JOBS

High-Skill Jobs: 33%	High-Skill Workers: 34%	Middle-Skill Jobs: 55%	Middle-Skill Workers: 32%	Low-Skill Jobs: 12%	Low-Skill Workers: 34%
----------------------	-------------------------	------------------------	---------------------------	---------------------	------------------------

55% of all jobs in central Iowa require education or training after high school up to an associate degree. Only **32%** of the workforce has the right skills for these jobs.

Iowa Workforce Development

INDIVIDUALS FACE FEWER BARRIERS TO THRIVE

Largest average monthly costs for an Iowa family of four (2 adults, 1 infant, 1 preschooler):

- \$1,035 child care
- \$800 health care
- \$659 housing

ALICE report

60% of people convicted of a crime are not employed one year after release from prison.

National Institute of Justice

\$59,844 is the median household income for all of Polk County.

VS

\$26,725 is the median household income for African-Americans in Polk County.

One Economy

PHYSICAL

Central Iowa ranks in the **bottom 20%** of U.S. regions for consuming 5+ servings of produce 4+ days per week.

Gallup National Health and Well-Being Index

SOCIAL

Workers who are **lonely** perform more poorly, quit more often, and feel less satisfied with their jobs, costing employers up to **\$4.5 billion** in the U.S.

Harvard Business Review

FINANCIAL

One-third of central Iowans worry about money on a regular basis.

Gallup National Health and Well-Being Index

PURPOSE/CAREER

People who find meaning in their work are **93% more engaged** and nearly **3 times** more likely to stay with their employer.

the human era @ work

COMMUNITY

A lower-income neighborhood in central Iowa has **1 mile of bike paths** and **8 opportunities for kids' activities** compared with **35 miles of bike paths** and **50 opportunities for kids' activities** in a higher-income neighborhood.

Place, Race, Poverty, and Young Children

SCHOOL READINESS

70.3%

of central Iowa kindergarteners were **proficient in literacy skills** during the 2017-2018 school year, up from 55.5% in 2014-2015*, with help from **Women United's** investments serving children from birth to age 8.

*Iowa Department of Education

EARLY-GRADE READING

Our 3rd Graders Must **READ! TO SUCCEED!**

828

volunteer mentors read with **1,057** children during the 2017-2018 school year through United Way's READ to SUCCEED programs: **Book Buddy, Power Read, and Real Men Read**, playing an important role in building reading skills.

More than **55,000 books** were given to children through United Way-funded programs in 2018.

United Way of Central Iowa

YOUTH SUPPORT

40,161

youth participated in United Way-funded school and/or out-of-school programs in 2018, with help from Education investments, including **Education Leadership Initiative**.

93.2% had good attendance.

90.4% passed all classes.

United Way of Central Iowa

BETTER JOBS

500+ individuals are receiving training or education for health care jobs, **100** more than projected, through United Way's **Central Iowa HealthWorks**. Nearly **70%** of individuals served represent minority populations.

25,000 more central Iowans were financially self-sufficient in 2017 than **two years** before.

U.S. Census Bureau, American Community Survey

45% income increase was achieved within 18 months by **614** adults who earned their high school equivalency diplomas through **United Way's Bridges to Success** initiative.

Iowa Workforce Development

REMOVING BARRIERS

190 volunteers provided free tax preparation to **4,703** central Iowans through the **Volunteer Income Tax Assistance (VITA)** program in 2018. This program helps low-income central Iowans receive the Earned Income Tax Credit and Child Tax Credit, which can help lift people out of poverty.

190 income tax credits were provided to low-income central Iowans through the Earned Income Tax Credit and Child Tax Credit, which can help lift people out of poverty.

In 2018, the Iowa Legislature repealed a law that revoked the driver's licenses of people with non-driving drug offenses. United Way's **Opportunity** initiative successfully advocated to remove this barrier for citizens returning from prison so they can find employment and housing.

United Way of Central Iowa

IMPROVING HEALTH

3 out of 5 health factors saw improvement in scores in 2018.

Gallup National Health and Well-Being Index

PHYSICAL

30,000 pounds of fresh produce were grown in community and corporate giving gardens supported by United Way, feeding **12,000** central Iowans.

United Way of Central Iowa

SOCIAL

United Way of Central Iowa and the Iowa ACEs 360 Coalition successfully **ADVOCATED** for legislation requiring all school employees to be trained annually on **adverse childhood experiences (ACEs)**, toxic stress, and suicide prevention.

United Way of Central Iowa

PURPOSE/CAREER

23,790 volunteers gave **243,081** hours through volunteer opportunities sponsored or supported by United Way of Central Iowa in 2018, leading to **\$6 million** in economic impact.

United Way of Central Iowa

FINANCIAL

19,000 uninsured and underinsured central Iowans accessed affordable **dental care**, avoiding expensive and unnecessary school and work absences, emergency room visits, and health complications.

United Way of Central Iowa

COMMUNITY

173,055 children in central Iowa demonstrated **healthy habits** through United Way's **5-2-1-0** initiative in schools, child care centers, and health care clinics.

5210

United Way of Central Iowa

ESSENTIAL NEEDS

Without access to essential needs, children cannot learn in school, families cannot be financially stable, and individuals cannot enjoy health and well-being.

PERCENT OF POPULATION STRUGGLING TO MEET BASIC NEEDS

	2012	2016
Polk	26%	36%
Dallas	21%	28%
Warren	26%	31%

ALICE Report

73% increase in visits to the DMARC Food Pantry Network since 2012

Des Moines Area Religious Council

71% of low-income households experienced **at least one civil legal problem** with health care, housing conditions, disability access, veterans' benefits, or other issues in 2017.

Legal Services Organization, 2017 Justice Gap Report

For a family of **four** with an annual income of **\$25,100**

rent costs **50 cents** for every dollar earned.

Polk County Housing Trust Fund

For every 100 low-income central Iowa households needing affordable housing, there are only 40 affordable units available. Closing the gap would require an additional **11,848 homes**.

Polk County Housing Trust Fund

259,768 meals and food items were served or distributed to individuals/families through United Way-supported partners and shelter services in 2018.

United Way of Central Iowa

In 2019, a free 24/7 **Housing Interpretation Hotline** was launched by Opportunity's New Iowans work group to help landlords and non-English speaking tenants solve housing issues.

United Way of Central Iowa

28,383 calls were received by United Way's **2-1-1 helpline** in 2018. United Way's 2-1-1 serves a 15-county area and helps Iowans address essential needs.

United Way of Central Iowa

2-1-1 TOP CALLER NEEDS BY CATEGORY

- 21% Housing
- 12% Income Support/Assistance
- 11% Disaster Services
- 8% Individual, Family, and Community Support
- 5% Food/Meal
- 5% Health Care
- 5% Utility Assistance
- 28% Other Needs

Central Iowa 2-1-1 data



MISSY

Missy Montero has missed a lot of school. She has been raising her younger sister since the age of 11, because her parents must work long hours to provide for the family. Recently, she's been caring for her young niece, too. Plus, the 17-year-old has juvenile arthritis and severe migraines, which cause debilitating pain. All these struggles meant Missy wasn't on track to graduate high school, despite good grades. Flex Academy, funded by United Way of Central Iowa, has allowed the senior to work at her own pace—attending school when she can, working from home, and interacting personally with her teachers to keep up when she misses days. Through the program, she has completed multiple courses faster than she would have in the normal track. She will graduate from East High School in May and plans to become a nurse.



RHONNIE

Last summer, Rhonnie Davis was forced to choose between putting down a deposit on an apartment and paying for textbooks for nursing school. She chose the latter—and lived in her car for months, breaking out in hives with worry over how to pay for her last two semesters at Mercy College of Health Sciences. Fortunately, she found United Way's Central Iowa HealthWorks, which not only funded the rest of her education, but also provided the emotional support she needed to earn her degree and pass her boards. After years of struggling financially, this grandmother of nine can now support herself in an industry that desperately needs workers. Rhonda was recently hired at MercyOne Des Moines Medical Center and looks forward to caring for patients.



BIZIMANA

When war struck Burundi, Bizimana Charles' family lost the land they farmed as they fled the country, eventually landing in a Tanzanian refugee camp. There Bizimana cared for his two children, taught school, and grew vegetables on a tiny plot. In 2009, Bizimana and his children resettled in Des Moines as refugees. Through the United Way-funded LSI Global Greens program, he began to farm again. Today, Bizimana grows eggplant, broccoli, cabbage, and many other crops on two acres in Altoona. His family, which now includes his wife and three young kids, can eat healthy year-round, helping Bizimana manage his diabetes and save money on groceries. He also sells his produce at the Downtown Farmers' Market to make additional income.

Read the full stories at www.unitedwaydm.org/stories

THIS IS YOUR FIGHT.

A BATTLE FOR THE FATE OF THOUSANDS.

You can give central Iowans a chance.

You can prove we are a community

Built on more than just dreams.

USE YOUR IMAGINATION.

What if 2,500 more kids received the **MENTAL HEALTH** care they needed?

What if 4,000 more students **GRADUATED** from high school?

What if 200,000 more individuals could pay their bills and **SAVE?**

What if all central Iowans got the **CHANCE THEY DESERVE?**

EACH OF THESE NUMBERS IS A LIFE.

A daughter, a mother

A brother, a grandfather

With a full life ahead

And broken hopes behind.

IMAGINE THE POWER of a community with everyone's potential unleashed.

IMAGINE THE PRIDE of the people who did it.

DO MORE THAN JUST IMAGINE.

JOIN THE FIGHT.

WE FIGHT TO GIVE EVERY CENTRAL IOWAN A CHANCE.

2019 COMMUNITY
IMPACT REPORT

