



Tamarack Institute

2025 Membership Package

Supporting the latest advancements
in innovative community change.



What's Inside

A Word from Our President and CEO	2
What Is the Tamarack Institute?	3
What Are Networks for Change at the Tamarack Institute?...4	
What Does It Mean to Be a Tamarack Member?	5
What Are the Benefits of Becoming a Tamarack Member?	6
How We Can Support Your Impact	7
Skills for Change	8-9
What We've Achieved Together	10
Membership Overview	11

A Word from Our President and CEO

Community has never been more essential, and it is the foundation of collaborative action as well as our ability to see each other's humanity. We believe that it is through investing deeply in community that we can collectively work toward a safer, more just, and peaceful world. It is through your work and leadership in communities across Turtle Island and around the world that community is imagined, built, and made essential.

Danya Pastuszek
President and CEO
Tamarack Institute





What Is the Tamarack Institute?

The Tamarack Institute is a registered charity and connected force for community change. We work to build the capacity of changemakers in cities, towns, and communities, within Canada and around the world.

We believe true community change occurs when we adopt new ways of thinking and working together. We equip communities with the skills, knowledge, resources, and connections to make lasting, meaningful impacts.

We are proud to support the latest advancements in innovative community change.

Thoughts from a Member


"When we look at how much work we've done in less than two years and the impact we've had in our community ... it's so huge. ... Collective impact has had a huge impact locally. This network is of such huge value and really allows us to have more effective utilization of our local resources rather than having to start from scratch with everything."

– Jodie Konior, Communities Building Youth Futures Oxford County


What Are Networks for Change at the Tamarack Institute?

Our Networks for Change support cities, towns, and local leaders to develop and implement large-scale change initiatives.


The Networks for Change are composed of Tamarack members, which include many different types of community changemakers – leaders from municipalities, non-profits, community groups, businesses, and beyond – who want to collaborate and shift systems to achieve transformative change in their communities. We equip members with skills, knowledge, resources, and connections so they can make lasting impacts.




Communities Ending Poverty: A network and movement dedicated to ending poverty in Canada, working with hundreds of municipalities and dozens of regional roundtables.



Communities Building Belonging: Strengthening neighbourhoods and ending social isolation and polarization in Canada. The aim of our growing network is helping communities to build belonging and thrive.



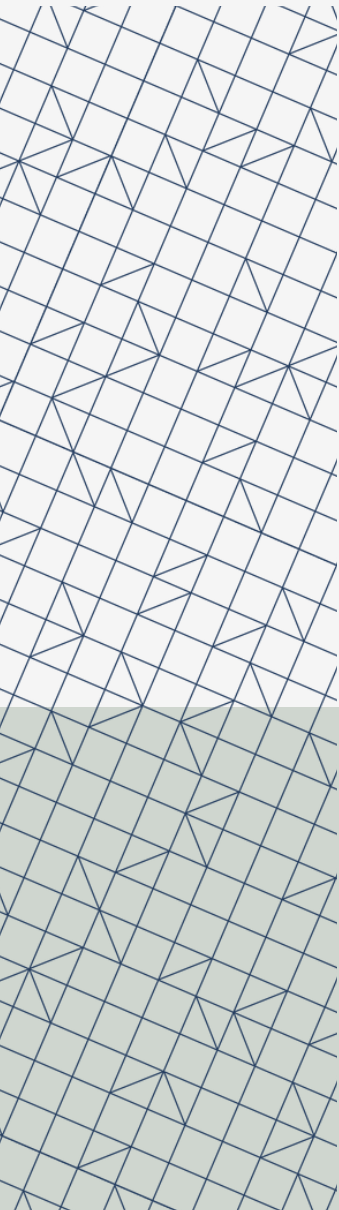
Communities Building Youth Futures: A youth-centered network of communities across Turtle Island that has and continues to develop and align communitywide strategies to increase youth leadership opportunities and to support youth (aged 15 – 30) to graduate high school and successfully transition to post-secondary, training, or employment.



Community Climate Transitions: A movement to advance local climate action and equity through multi-sector partnerships and approaches that centre residents and the community.

What Does It Mean to Be a Tamarack Member?

As a Tamarack Member, you will gain access to supports, resources, and tools from across all four Networks for Change. We offer two membership tiers with flexible pricing designed to allow you to focus on the issues that you care deeply about and access the supports your community needs:



Members with an **Everything tier** membership want to deeply engage with Networks for Change, actively advancing a learning journey to accomplish goals through coaching, cohorts, and policy advocacy.

Members with an **Essentials tier** membership are looking to explore Tamarack's core offerings plus additional learning opportunities while they get to know the Networks for Change.

Whether you are exploring membership for the first time or are a returning partner, Tamarack membership can help you achieve your goals for 2025 and beyond.

Thoughts from a Member

"Being a member of this national body offers added credibility to the work we do and enables us to see the broader picture of poverty reduction across the country. Communities of Practice allow us to learn from others and thoughtfully apply new strategies to our work."

– Dianna Souveny, Red Deer, AB

What Are the Benefits of Becoming a Tamarack Member?

Tamarack membership unlocks the wealth of knowledge, tools, and experience available through a network of like-minded peers, Tamarack's expert staff, and a national movement.

- ✓ **Peer Learning and Networking** – Learn, network, and collaborate through professional members-only Communities of Practice (CoP) and Cohort programs that bring together changemakers based on their region, their professional or community role, and/or specific priorities or issues. Join public and private webinars featuring innovative and emerging ideas and experiences and EngageFest! Tamarack's annual learning festival. Plus, access additional online courses and paid workshops at discounted member pricing.
- ✓ **Tailored Capacity Building** – Easily navigate connections and resources that can help you reach your goals with one-on-one support from one of our dynamic Manager of Communities. Members with an Everything-tier membership also have access to one-on-one coaching with Tamarack's Consulting Directors, who will share their deep knowledge and experience across a range of skills.
- ✓ **Movement Building** – Join a national movement for place-based change that reinforces the need to work collaboratively to end poverty, build youth futures, build belonging, and create just climate transitions – both within communities and across governments.

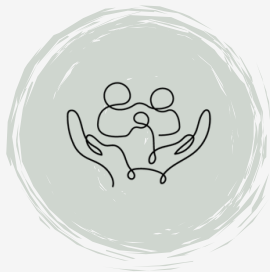
How We Can Support Your Impact



Coaching from Consulting Directors, which covers the following areas of expertise and more:*

- Community Engagement
- Collaboration and Collective Impact
- Community Innovation
- Collaborative Governance and Championship
- Asset-Based Community Development
- Evaluating Community Impact
- Equity, Diversity, and Inclusion

*Everything-tier Only



10+ ongoing Communities of Practice and Cohort programs on topics such as asset-based community development, ending working poverty, and climate adaptation and resilience



\$50 discount on additional online courses and paid workshops



160+ Networks for Change members across Turtle Island

200+ Resources created as of 2024



150+ Webinars and Workshops hosted as of 2024

Skills for Change



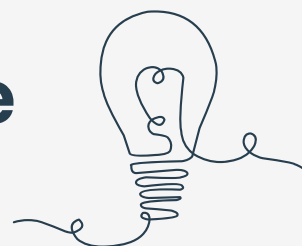
Our six **Skills for Change** represent different competencies that can support community changemakers in achieving greater impact. They are the backbone of the work we do.

Community Engagement ensures that the people who are closest to an issue, place, or opportunity, are involved in creating bold visions for their future. Community engagement increases community cohesion and allows community members to have ownership over the outcomes that will ultimately impact them.

Collaboration and Collective Impact spark the fresh thinking needed to create high-impact solutions to address the complex, interconnected issues affecting communities. When the leadership and knowledge of various sectors, groups, and individuals are united, it unleashes creativity and mobilizes coordinated, community-wide action in ways that promote justice and equity for all.

Community Innovation looks beyond proven practices to create new, never-before considered solutions that are meaningful to the community.

Skills for Change



Continued from previous page

Asset-Based Community Development (ABCD) shines a spotlight on the inherent strengths and capabilities of individuals. By acknowledging and harnessing these strengths, individuals are supported in proactively contributing to positive change within their communities.

Collective Leadership involves uniting people to address complex issues through collaborative processes. Success is maximized by working collectively across diverse groups, emphasizing equity, and incorporating the voices of those most affected. Effective collective leaders prioritize trust-building, power navigation, deep engagement, and the development of impactful collaborative governance practices.

Evaluating Community Impact is an essential skill in community change. It's necessary for understanding what works, what doesn't and for learning together to understand what needs to happen next. With the right questions and the right set of evaluation principles, values, and tools, communities can make impressive progress on the challenges they are facing.



What We've Achieved Together

Examples of the power of **Networks for Change**



Discover how Tamarack designed a community development program with the **Co-operative Housing Federation of Canada** and four housing co-operatives, strengthening their collaboration and community engagement skills to cultivate belonging and more vibrant communities.

Saint John, NB, successfully broke the cycle of poverty by engaging the whole community to drive change. Read about how participating in Networks for Change was an opportunity to learn from poverty reduction efforts being tested elsewhere in the country the world, provide leadership to other communities, and grow their national recognition.

Across Canada, Tamarack's radical community collaborations and youth-for-youth programming reached 63K+ young people. Learn how Networks for Change contributed to youth engagement and leadership across the country

Membership Overview

Whether you are exploring membership for the first time or are a returning partner, Tamarack membership can help you achieve your goals for 2025 and beyond.

Benefits	Everything	Essentials
Contacts †	Any	3
Discounts on Paid Workshops	Member Pricing	Member Pricing
EngageFest! Tickets	2 Free Tickets + Member Pricing	1 Free Ticket + Member Pricing
Member-Only Communities of Practice (CoP) Opportunities	Any	1 CoP Series Per Year
Access to Webinars	✓	✓
Manager of Communities Support	✓	✓
Newsletters	✓	✓
Consulting Director Coaching	✓	✓
Open Group Coaching Calls	✓	✓
Cohort Opportunities	✓	✓
Annual Fee: Billed Annually at Sign-Up	\$2,250 Annually	\$1,000 Annually

† The number of individuals in the member's organization or collaborative who can access the collective membership benefits listed above.

Tamarack offers barrier-free access to membership through sliding scale pricing. If your capacity to pay the full fees listed above is a concern, please let us know. We are committed to ensuring that you can access tools you need to be successful in your work.



tamarackcommunity.ca