



Community Emergency Preparedness in Action

Community's Role in Emergency Preparedness
Community of Practice





Land Acknowledgement

Turtle Island (North America) has been home since time immemorial to the ancestors of First Nations, Métis, and Inuit Peoples. We recognize that, in this territory, Indigenous rights holders have endured historical oppression and continue to endure inequities that have largely resulted from the widespread failure of non-Indigenous treaty people to hold up their responsibilities.

Reconnaissance du territoire

L'île de la Tortue (Amérique du Nord) abrite depuis des temps immémoriaux les ancêtres des Premières Nations, des Métis et des Inuits. Nous reconnaissons que, sur ce territoire, les détenteurs de droits autochtones ont subi une oppression historique et continuent d'endurer des injustices qui résultent en grande partie de l'incapacité généralisée des non-autochtones signataires de traités à accepter leurs responsabilités.





Technical Considerations

- We've got you covered - You will receive a full recording of the call, the slides as well as a collection of links & resources
- Join the conversation - Use the chat box on your Zoom client to submit questions you'd like us to discuss
- Technical Support - You can use the chat panel to ask for technical support throughout the session



Addressing Harm in Virtual Spaces

- Tamarack learners agree to center equity, inclusion, and a sense of connection across all people.
- Tamarack's priority and responsibility is to protect the safety and well-being of staff and members of our learning community.
- By participating in this event, you agree to participate with openness and respect for all.



Who's in the room?

Come off mute and share your name,
organization/affiliation, and where are you calling
from

Tell us one word that describes how you are
showing up today





What is this CoP about?

This CoP is made up of a group of peers committed to sharing and learning from one another to accelerate their collective understanding of the role of residents and communities in preparing for emergencies; to enhance their practice; and, to share their knowledge and insights across the field.

In this CoP we apply the Asset based Community Development (ABCD) and Collective Impact (CI) lenses to Emergency Preparedness which focuses on the inherent strengths, knowledge and skills already present in community on how to best prepare and respond to emergencies. From asset and hazard mapping to youth engagement and centering Indigenous knowledge, using the ABCD methods, we explore how to activate and mobilize communities around a shared goal of helping communities and agencies take proactive action to resilience planning and collaborate effectively.



Today's session

 TAMARACK
INSTITUTE





Community Emergency Preparedness in Action

Lynn Shepherd





Joining today from the ancestral, traditional, and unceded homelands of the šxwməθkwəyəmaʔt təməxw (Musqueam), səlilwətaʔt təməxw (Tsleil-Waututh), and Skwxwú7mesh-ulh Temíxw (Squamish) Nations



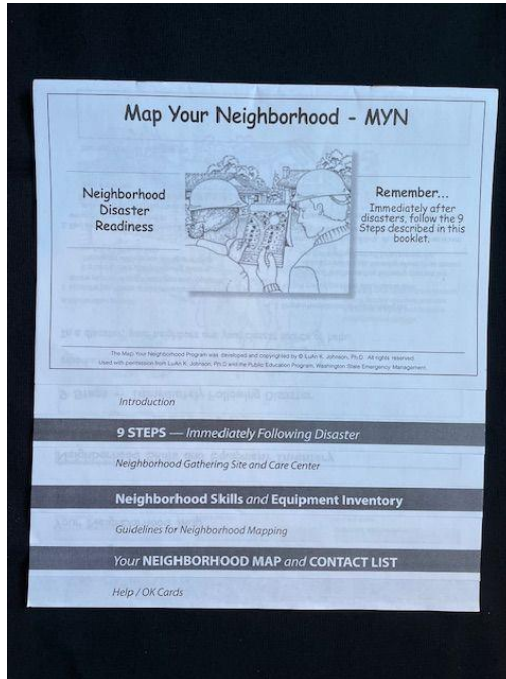
Kitsilano, Vancouver, BC



Dunbar Earthquake and Emergency Preparedness (DEEP)



Map Your Neighbourhood Workbook



Neighborhood Skills and Equipment Inventory

Who knows what? Who has what? Who can do what?
Write the names of neighbors with these skills/knowledge and equipment/supplies.

SKILLS / KNOWLEDGE

First Aid Skills

Child Care Skills

Elder Care Skills

Search and Rescue Skills

Crisis Counseling Skills

Plumber Skills

Carpenter Skills

Electrician Skills

Fire Fighting Skills

Military/Service Skills

Mass Feeding Experience

Heavy Equipment Operator

HAM Radio Operator

Language Skills

Coordinating/Organizational Skills

Other skills that may be helpful in an emergency:

EQUIPMENT / SUPPLIES

First Aid Supplies

Tents/Spare Bedding

Chain Saw

Power Tools

Crow Bar

Generator

Fire Extinguisher

Camp Stove

Weather Radio

Walkie-Talkie

Ladder

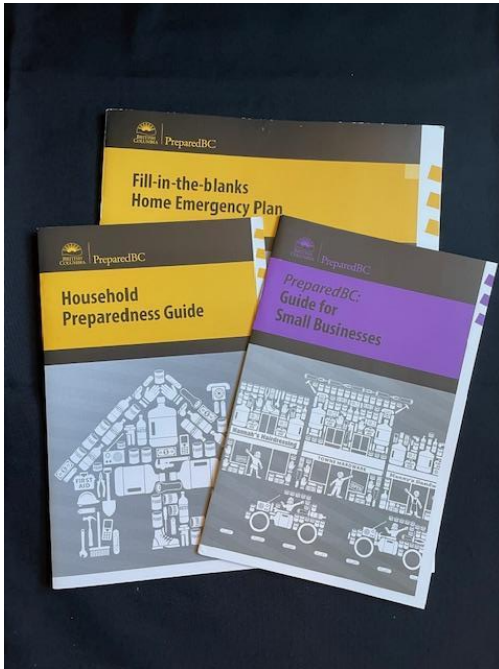
Strong Rope

Lighting

Other specialized equipment that may be helpful in an emergency:



EP Resources from Public Agencies



EP Project to Engage Residents in the Apartment Building





Good Neighbour Kitsilano: Block Connector Program and Community Action Network





2023 Focus: Emergency Preparedness

In 2023 we want to prepare residents of Kitsilano to respond to emergency events by: sharing EP resources, connecting neighbours within apartment buildings and city blocks and providing information on services and supports available in the community.

Good Neighbour Kitsilano: Engagement and Outreach



Grab-and-Go Bag Workshops





What do you need to have in your Grab-and-Go Bag?

- Shelter (protection from weather, need for heat & light)
- Food & Water
- Personal Care
- Pet Care
- Communications
- Important Documents
- Miscellaneous

2024 Focus: Block Connectors

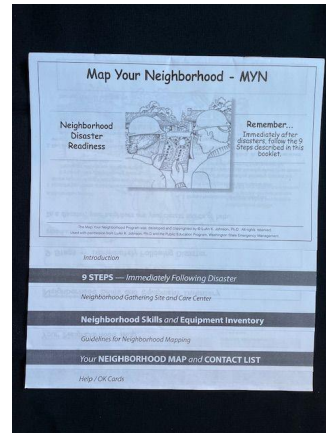


Block Connector Program



EP Resources for Block Connectors

- Grab and Go Bag: Train the Trainer Workshop
- Grab and Go Bag: Demonstration Kit
- Map Your Neighbourhood Activity





Stay in Touch!



goodneighbourkits@gmail.com



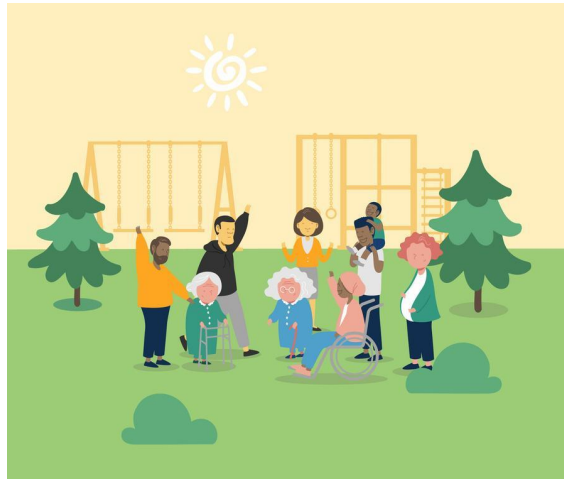
@good.neighbour.kitsilano

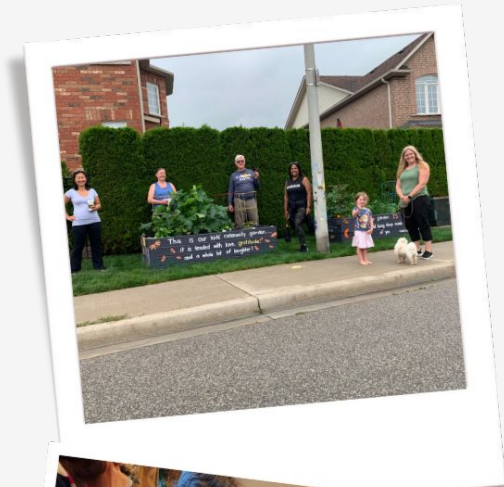


@Good.Neighbour.Kitsilano



Thank you!





Thank you

Community is a **verb**.

Empowering action. Inspiring change.



 **TAMARACK**
INSTITUTE

